

DESMI

Proven Technology
One Global Company

Water-Source Heat-Pumpsthe Future?



An aerial photograph of a city, likely Alesund in Norway, showing a dense urban area with many red-roofed buildings. In the background, a large industrial complex with several tall smokestacks is visible, along with a body of water and a line of wind turbines on the horizon. A semi-transparent white banner is overlaid on the upper part of the image.

About DESMI

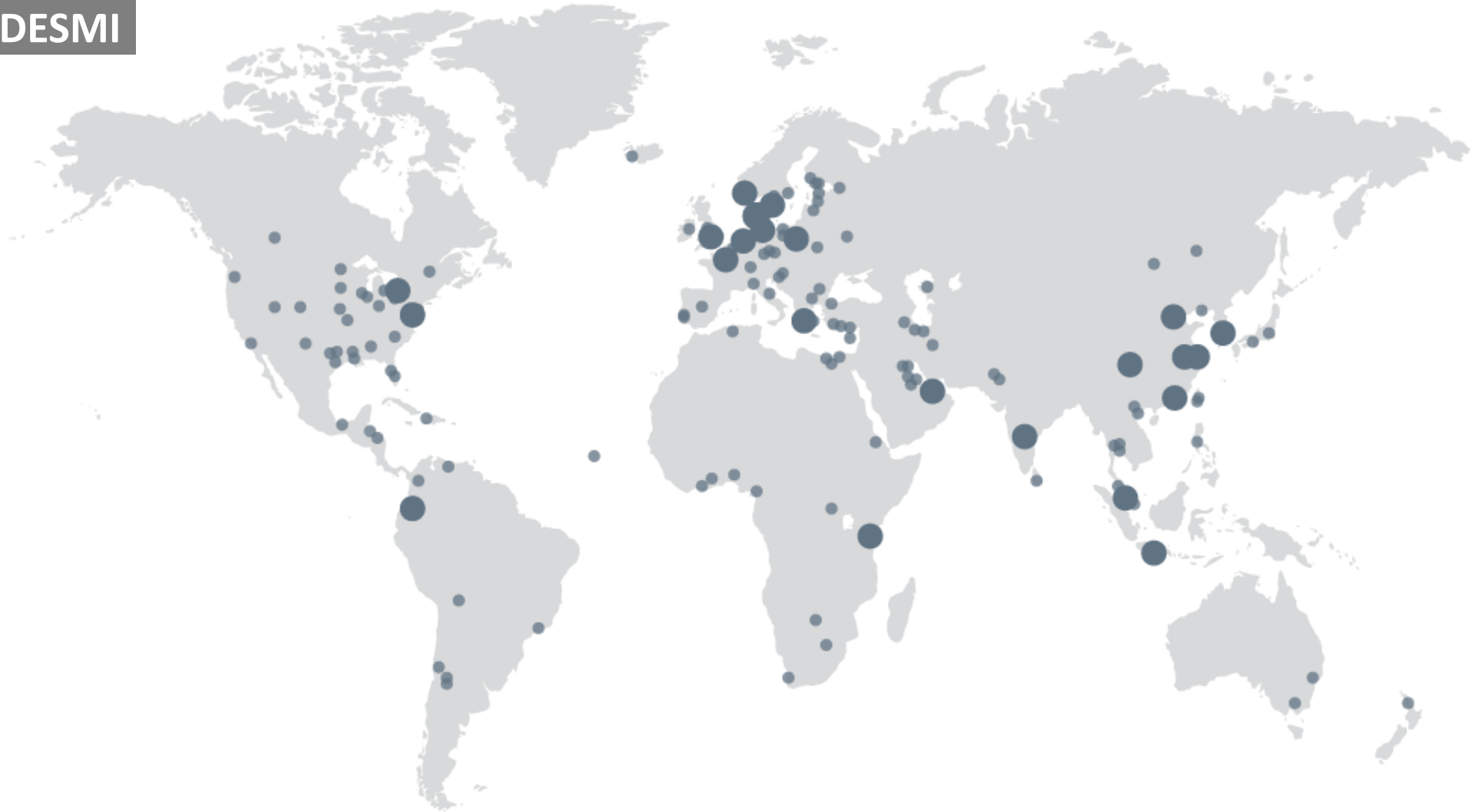
About DESMI



DESMI A/S Headquarter Denmark

- One of the Most Experienced Pump Manufacturers in The World
- Established in 1834
- Three main Production and Distribution Centres – Denmark, China and the USA
- 18 DESMI Subsidiary Companies around the world
- Currently around 1,000 Employees globally
- Present in the UK since 1978

About DESMI



An aerial photograph of a coastal city. In the foreground, there is a dense residential area with many multi-story buildings featuring red-tiled roofs. A prominent white church with a tall spire is visible on the left. In the middle ground, a harbor area contains several large industrial buildings and structures. In the background, a body of water is visible, with numerous wind turbines scattered across the distant shoreline under a clear sky.

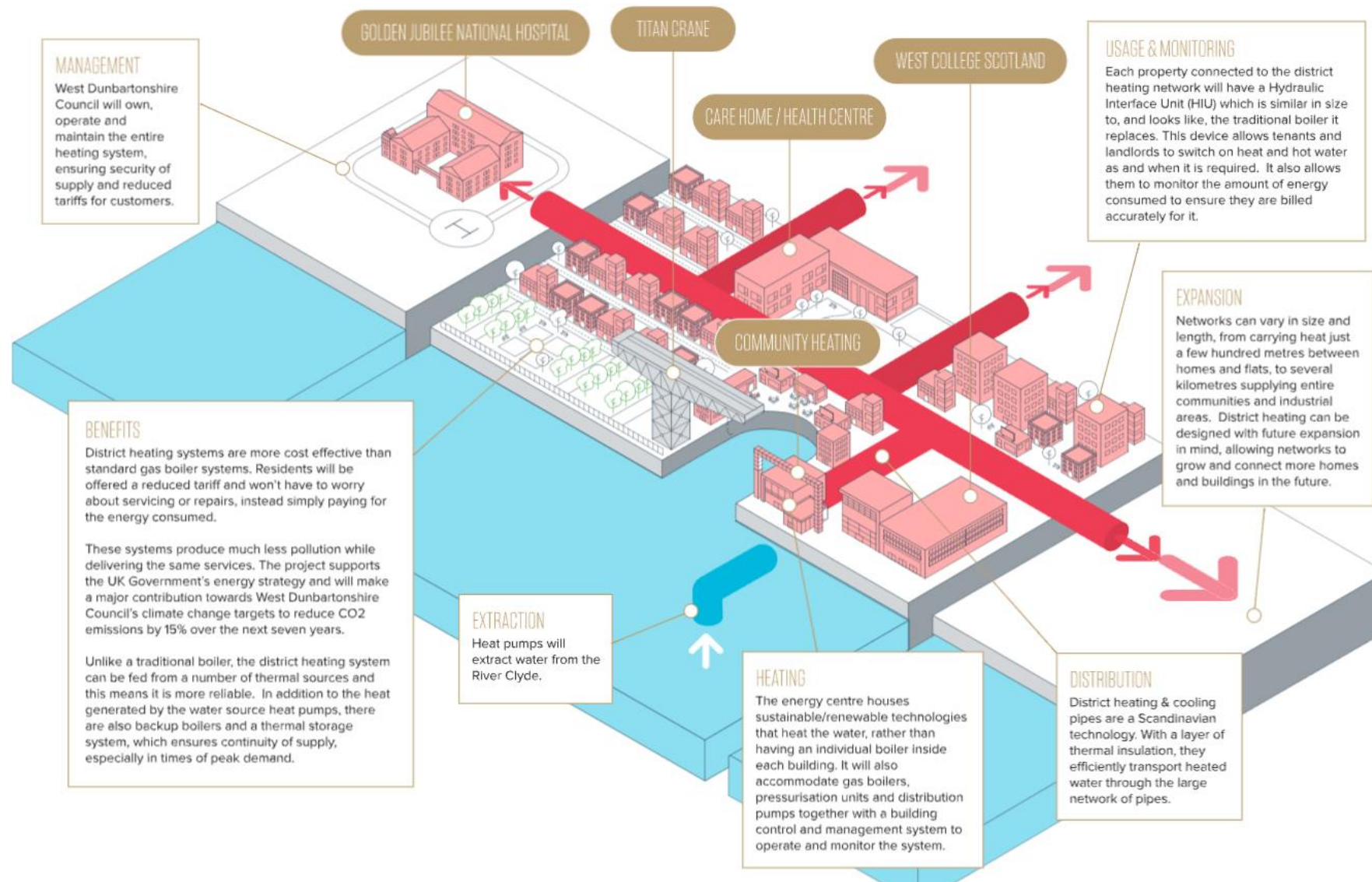
Case-Study - Queens Quay DHN

Queens Quay – the Project



- Located along the River Clyde near Glasgow
- A purpose built £250m development on the site of a former shipyard
- 80 Acre site comprising of:
 - Residential Properties
 - Care Home
 - Health and Leisure Facilities
 - Retail Outlets
 - College
 - Hospital

Queens Quay – the Plan



Queens Quay – the Pumps

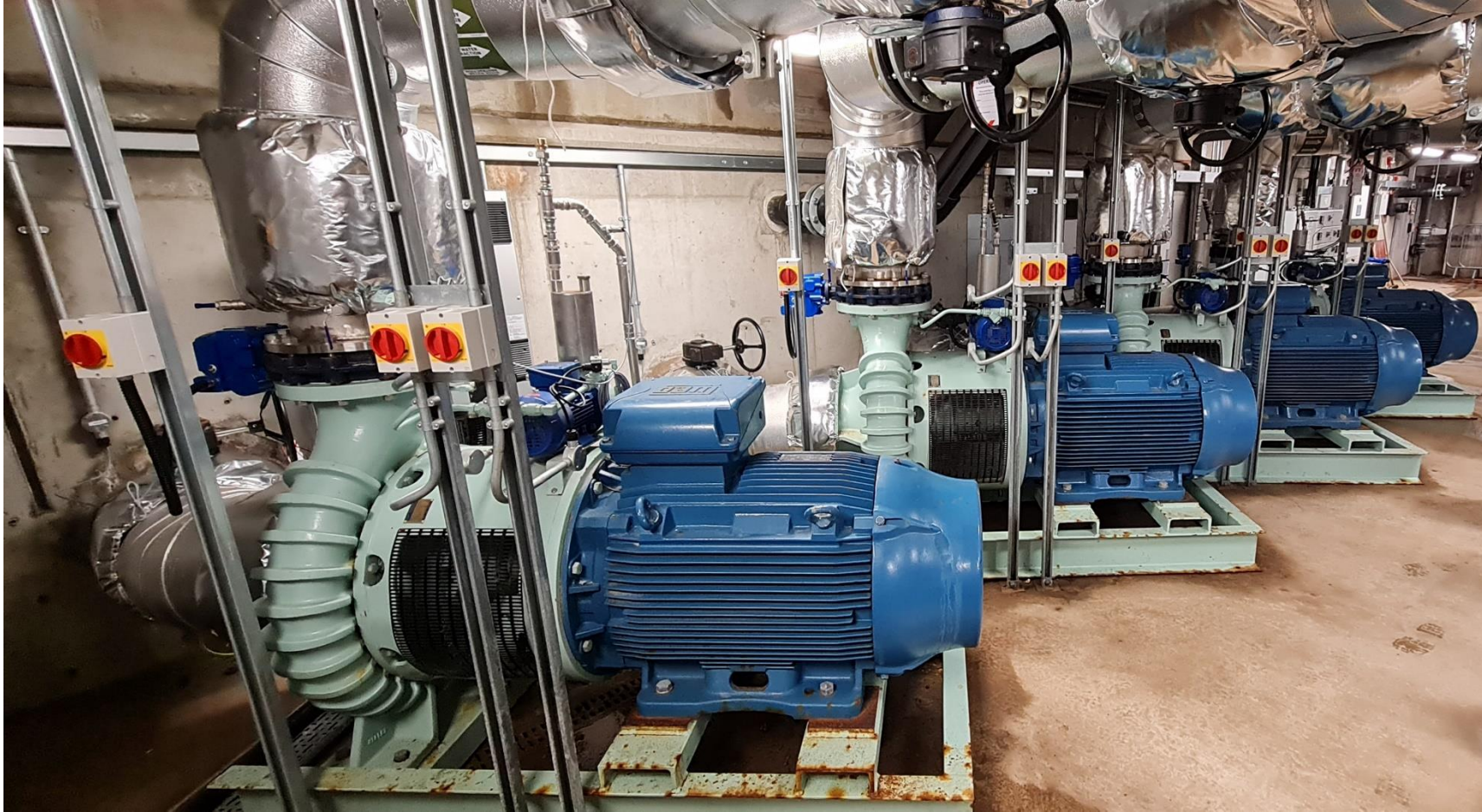


DESMI supplied Abstraction Pumps for this project, that extract water from the River Clyde, and feed water to the Energy Centre. We have used Bronze pumps, due to the fact that the River Clyde is partially Salt-Water at this point.

In the Energy Centre, there are Water-Source Heat-Pumps, that are extracting energy from the river water supply and converting this to hot water for the District Heating Network.



Queens Quay – the Pumps



Pump Details:

- NSLH300-525B/D02
- Horizontal End-Suction Pump
- Bronze Casing
- Bronze Impeller
- 132kW 6-Pole Motor
- 160 l/s Flowrate
- 4.5 Bar Discharge Pressure
- Self-Priming Unit installed



Questions & Answers

Thank You for Your Time
– We are Ready for Business !!